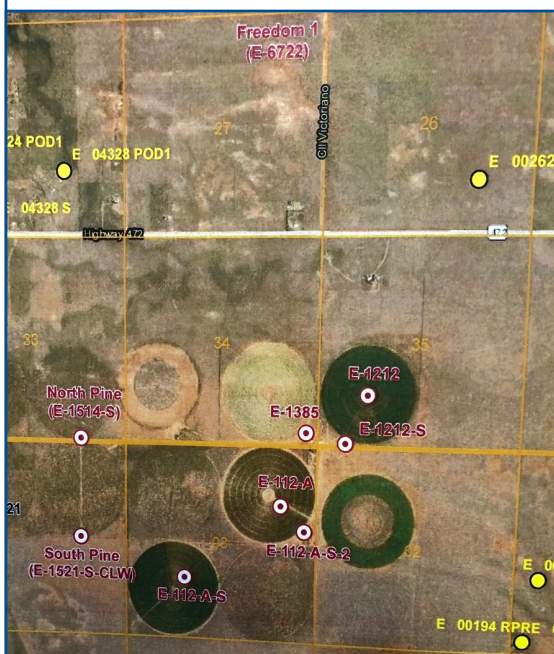


March

A MONTHLY PUBLICATION
FROM YOUR WATER AND WASTEWATER ASSOCIATION

2020

Source of Entranosa's "Sweet" Water

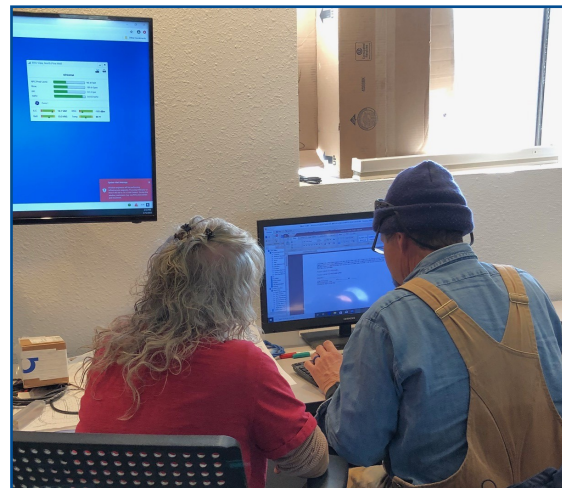


Entranosa's Pine Canyon well field, where the "sweet water" low hardness comes from. North and South to the left, Freedom 1, top and Freedom 2 bottom. New well E-1212 (East Pine Canyon). These wells are located south of Kings Hwy, 5 miles west of Stanley. When all wells are pumping, over 1,200

gallons per minute are flowing west to Entranosa members.

Technology Improves Efficiency in Work Order

Every year Entranosa's Field Coordinator, Michelle Hissa, writes over 5,000 work orders for our field operators to go on service calls. Pictured here is Michelle training field operator Vince Collier on a work order process that will greatly improve efficiency and reduce workloads. Work orders will be sent to operators via cell phone or tablets and once the job is completed, the operators will be required to close out their work orders. This process will reduce time-consuming and inefficient trips into the Entranosa office to process paper work.



Be Water Aware

Corrosive water and high water pressures can cause holes in copper fittings. In the past 30 days, this hole has leaked over 1 million gallons of water. Please help us conserve water and reduce costs to members by reporting unexplained leaks, puddles or flowing water in the system. If water is flowing out of a meter can or the soil is wet around it, please call us! The emergency number is answered by an operator around the clock at 505-604-5935.



Pumping Season Begins

On Sunday March 1, the Paa-Ko Ridge Golf Club opens for play. The pro-shop and the temporary bar and café will also open on March 1. Last year, due to the construction, the course didn't open until May. The formal restaurant, which will be called The Club, will open later this spring.



Courtesy Golf Week

Entranosa Water & Wastewater Association
Office: (505) 281-8700

Emergency: (505) 604-5935 www.entranosawater.com

Office Hours:

Monday 9:00 am – 4:30 pm

Tuesday – Friday 8:00 am – 4:30 pm

Entranosa is an equal-opportunity employer.

- ◇ **Reliably supply quality drinking water at a reasonable price to our membership, such that the Association is self-sustaining**
- ◇ **Promote water conservation**
- ◇ **Provide leadership for our Community concerning water and wastewater issues**
- ◇ **Protect our ground water resources through environmentally responsible business practices**
- ◇ **Pursue water & wastewater service opportunities in the East Mountain and Estancia Basin Regions**

**ENTRANOSA'S
MISSION
STATEMENT**



ENTRANOSA WATER NEWS

Committed to Providing Safe, Clean Water to All Our Members



Entranosa Water's 2/27/20 Hardness Reading: 22 grains

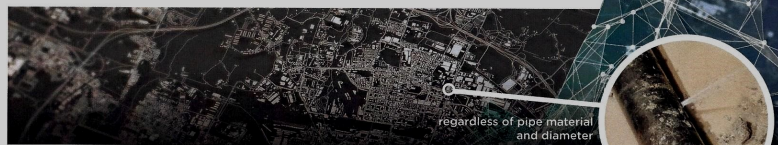
Average Water Usage: February, 4,968; January 3,870 gallons

Utilizing Technology to Find and Repair Leaks

With 280 miles of pipe, finding leaks can be a real challenge. Entranosa is looking at some ground-breaking technology that has been proven to be a cost-effective tool. Here is one promising option that uses satellite technology to find signs of water on distant planets, which is now being used to find leaks in water systems. For more information on this sci-fi technology, you can visit the company's website. It has been used since 2016 to search for the distinctive "signature" of treated water.



DETECTING LEAKS FROM SPACE



Technology once used to find water on other planets has now been adapted to find water right here on Earth!

Water utilities are now able to benefit from this ground-breaking technology developed by leading space agencies to save you time, money and water. Satellites orbiting Earth scan the ground and detect water leaking from urban distribution and transmission water networks. Utilis Corp has patented this technology and brought it to the market to help you. With this cost-effective tool at your disposal, non-revenue water (NRW) is now too costly to ignore! Let Utilis Corp reduce your NRW today.

How we do it?



Satellite Image Acquisition



Radiometric Corrections



Algorithmic Analysis



Web-based app and intuitive UI

"With Utilis technology we can find hidden leaks faster and bring a substantial reduction to background leaks and loss. If we consider this small area that was scanned and apply it on our entire network (estimated 3,500 KMs) we are looking at potential annual saving of 918,000,000 gallons of water".

Mr. Alexandru Verioti, GIS and Leak Detection Manager, SC Raja SA, Romania

KEY BENEFITS:

- Offers the lowest cost of leaks found
- No CAPEX investment needed
- Covers a large area, can be repeated multiple times a year
- Proactively reduces NRW, reducing potential damage and claims
- Pinpoints problem areas, allowing users to focus their traditional leak detection efforts and increase efficiency

Entranosa Hiring Two Laborers

Entranosa Water & Wastewater Association is hiring two general laborers for their team. The full job description is posted on the Entranosa website at www.entranosawater.com. If you are interested, please visit the website or call the office for a complete job description. The telephone number is 505-281-8700.



Field Operator Vince Collier shows what is required of new hires.

Innovative Couple



The husband and wife team of Finance Manager Jayme Nykanen and Operator Eric Nykanen, worked closely to improve the wireless meter reading technology, which required the billing department and operators to learn new equipment and software.

Site of Future Bulk Water Station

This year, with improved southside water flows, Entranosa will build a new bulk water station in front of the main office. This location will help to reduce the number of water haulers pulling water from fire hydrants. The new station will not impact customer parking at the office.



Entranosa's Board of Directors

Chair : Linda Barbour **Vice Chair:** Lee Liggett **Secretary:** Rik Thompson **Treasurer:** Dennis Hodges **Members:** CJ "Skip" Mead, Paul Gorder, Rob Baracker

Office 505-281-8700

www.entranosawater.com

Emergency 505-604-5935